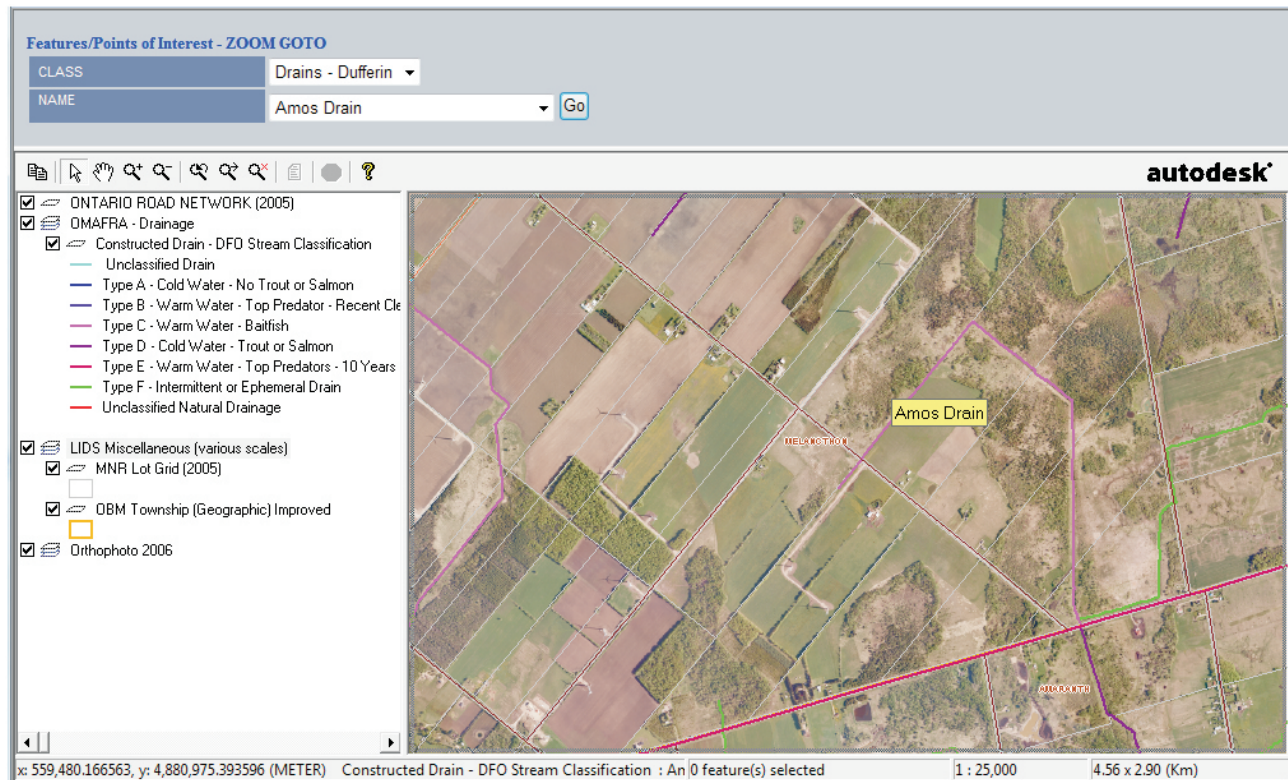


Introduction

The Hunter GIS Municipal Drain Solution permits web-publishing of constructed surface and subsurface drain. Township Lot Fabric, Ownership Parcels, Orthophotos, Single Line Street Networks and other data for quick and easy on-line access.



Important features and capabilities include:

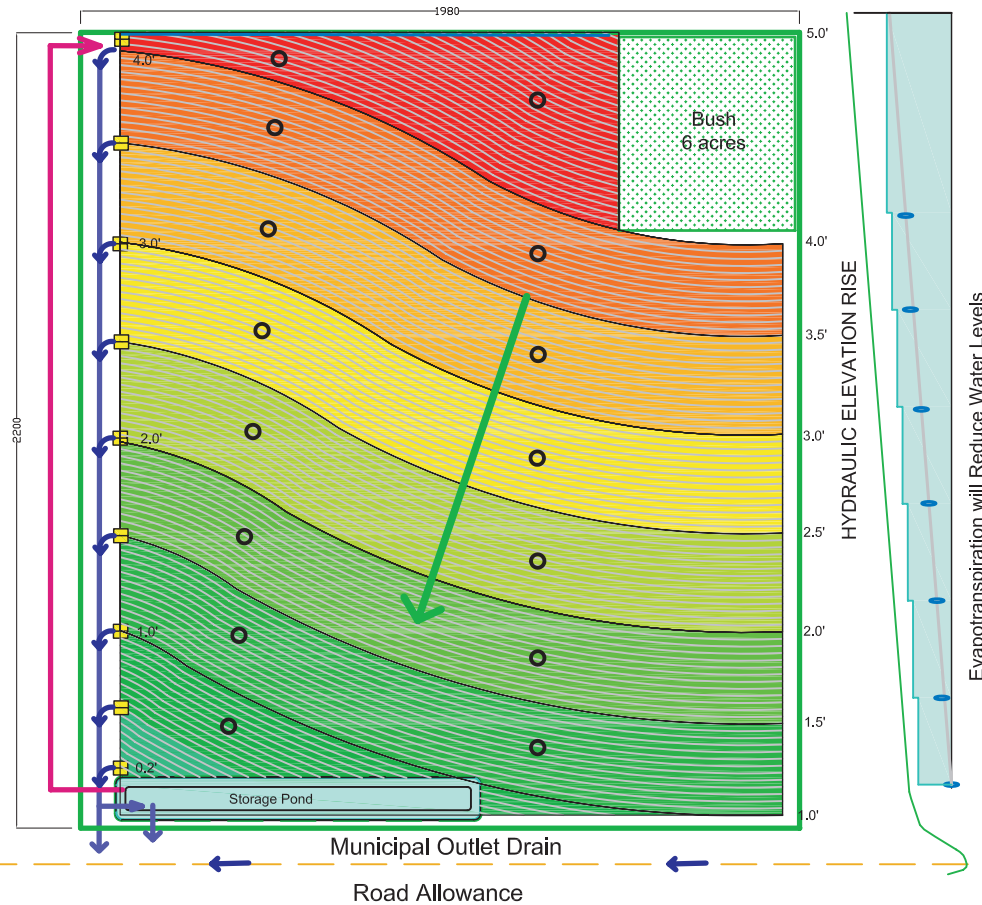
- Integrated Municipal Drain searches with “Zoom Goto” functions
- Open and closed drain maps
- Systematic and random drainage systems
- Dept. of Fisheries and Oceans stream classifications
- Assessed watershed areas and catchments
- Approved outlets
- Hyperlinked access to drain infrastructure images, drawings and documents for desktop viewing
- ODBC/OLEDB links to related databases (local ownership and tax assessment).

The Hunter GIS Municipal Drains solution is designed to integrate with MapGuide Open Source, Autodesk’s MapGuide Enterprise and MapGuide v6.5 and ESRI ArcGIS Server (*in progress*), and is database independent.

Municipal Drains Controlled Drainage / Subirrigation (CDSI)

Dwg 1.0

New or Replacement CDSI with Closely Spaced Laterals, 6 Inch Water Elevation Control Zones and Storage Ponds



LEGEND

New 4 in Laterals @ 20' spacing	—	Control Weir	
Subirrigation Header (Pumped)		Ground Surface	
Township Lot Line (100 acres)		Drainage Header	
Observation Well		Drainage Water Flow	
		Bypass Drain / Overflow	

Plot Scale: H:1" = 400' V:1" = 20'
Plot Date : January 17, 2008

Concept

