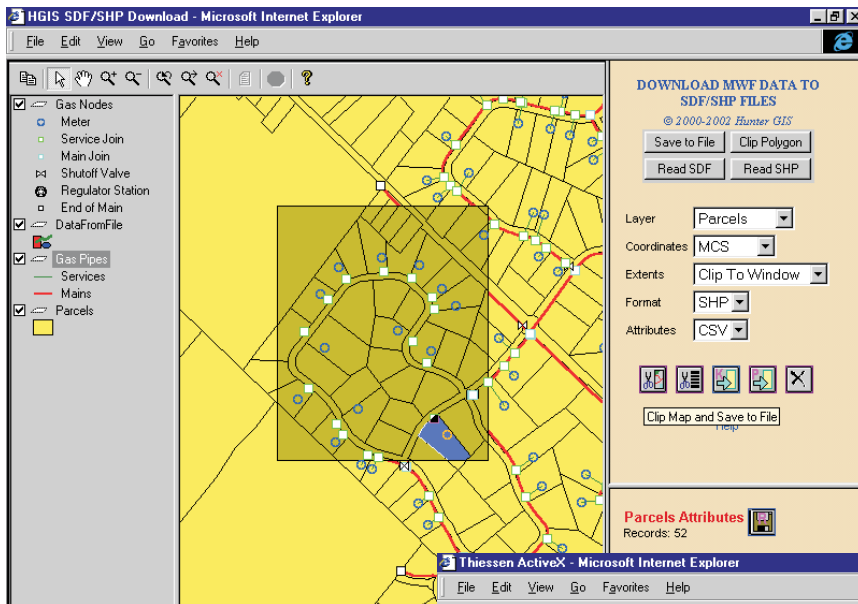


MapGuide Viewer API Extensions



- A suite of ActiveX Controls that extend the processing capability of the MapGuide Viewer API
- Operates within the MS IE browser for client-side processing
- Public methods accessible via JavaScript/VBScript
- Import/export local files
- GIS analysis functions
- Built on Autodesk MapGuide

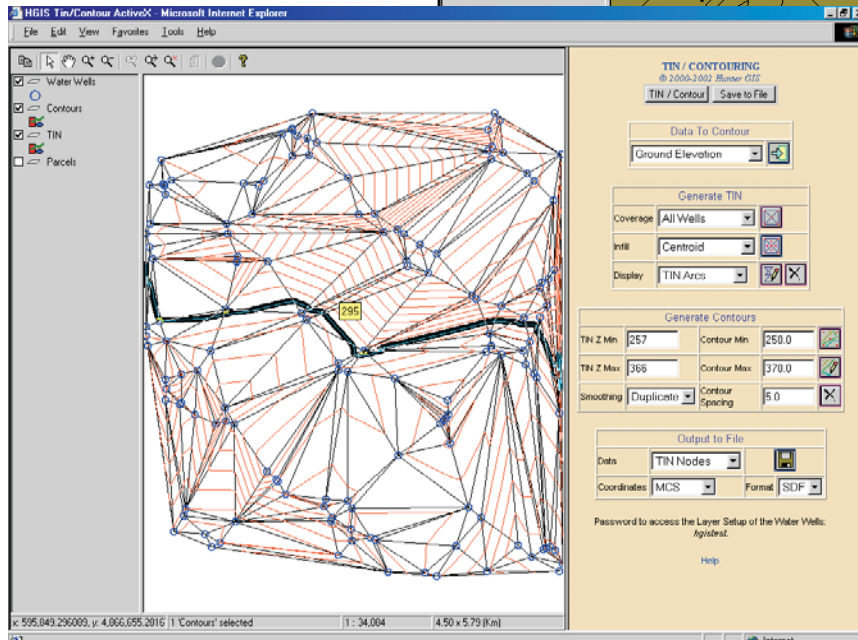
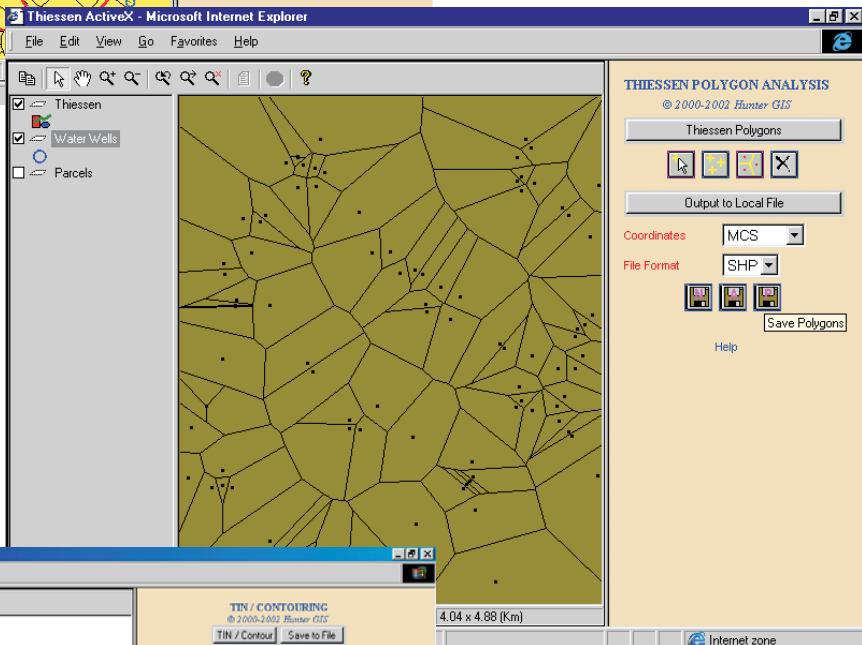
x: 596,390.073 | 1 'DataFromFile' selected | 1: 12,159
[javascript.parent.clipMapFile()]

ReadSDF - import objects from local Autodesk SDF files

ReadShp - import objects from local ESRI Shapefiles

ClipApi - export objects to local SDF, SHP or TXT files

ClipPoly - clip map objects to irregular polygons (overlay)



Snap - provides object snap for redline applications

Thiessen - generate the Voronoi Diagram for selected points

TIN/Contour - create TINs, aspect arrows, and contour lines